

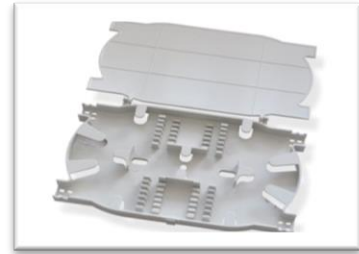
Splice Tray



SP-NB12



SP-W24



SP-NW12

Features

- Closure provides perfect solution for the protection of the junction point of optical fiber cable from environment
- Silicone gasket is used to seal closure and provide a long term
- Closures have two or three cable entrance ports on each end
- Closures can be installed at temperatures between (-40°C~80°C)
- Closures are compact and lightweight